



**STAINLESS STEEL**

**150 LBS SCREWED FITTINGS**

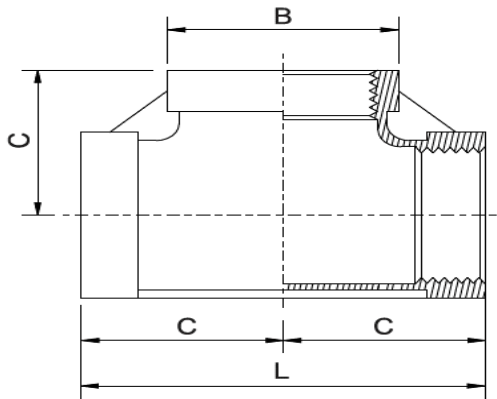
**BSPP (ISO 228-1), BSPT (ISO 7-1), NPT THREAD**

DIMENSION CONFORM TO ASME B16.3 AND ANSI/MSS SP-114-2018 WHERE APPLICABLE

MATERIAL CONFORM TO ASTM A351 GR. CF8 & CF8M

PRESSURE-TEMPERATURE RATINGS 300 PSI (-29 TO 66°C)

MADE BY LOST WAX INVESTMENT CASTING



## EQUAL TEE

SIZE	B	C	L	Weight
	(mm)	(mm)	(mm)	(Kg/Pc)
1/8"	14.0	17.0	34.0	0.03
1/4"	17.3	18.8	37.5	0.04
3/8"	21.0	21.0	42.0	0.05
1/2"	26.5	26.3	52.5	0.09
3/4"	32.0	30.0	60.0	0.13
1"	39.4	34.5	69.0	0.20
1 1/4"	50.0	41.8	83.5	0.35
1 1/2"	57.6	46.3	92.5	0.50
2"	69.3	52.8	105.5	0.66
2 1/2"	90.0	67.5	134.2	1.54
3"	100.0	74.5	149.0	1.68
4"	127.0	90.5	181.0	2.60